



SINYALIZASYON

ANTRA INTERSECTION CONTROLLER DEVICE

ANTRA

➔ Device is manufactured by Sinyalizasyon Electronics to provide traffic regulation and pedestrian safety.

➔ The intersection controller device is a technology that ensures traffic and environmental safety by operating the signal lamps with built-in infrastructure installed on existing junctions.



<http://www.sinyalizasyon.com.tr/antra-antra32>



Çağdaş Emek Sanayi Sitesi
1439. Sokak No: 12 Ostim
Yenimahalle-ANKARA
TEL: 0 312 395 3545

www.sinyalizasyon.com.tr
info@sinyalizasyon.com.tr



2 of 14



ANTRA

➔ With the security functions on the device, features such as lamp outbreaks, infrastructure problems, police control, detector and green wave systems are offered to users. It also makes date-time shifts and automatic summer and winter time adjustments, by GPS and internet connection. Our programming interface is compatible with Windows based operating systems.



<http://www.sinyalizasyon.com.tr/antra-antra32>



Çağdaş Emek Sanayi Sitesi
1439. Sokak No: 12 Ostim
Yenimahalle-ANKARA
TEL: 0 312 395 3545

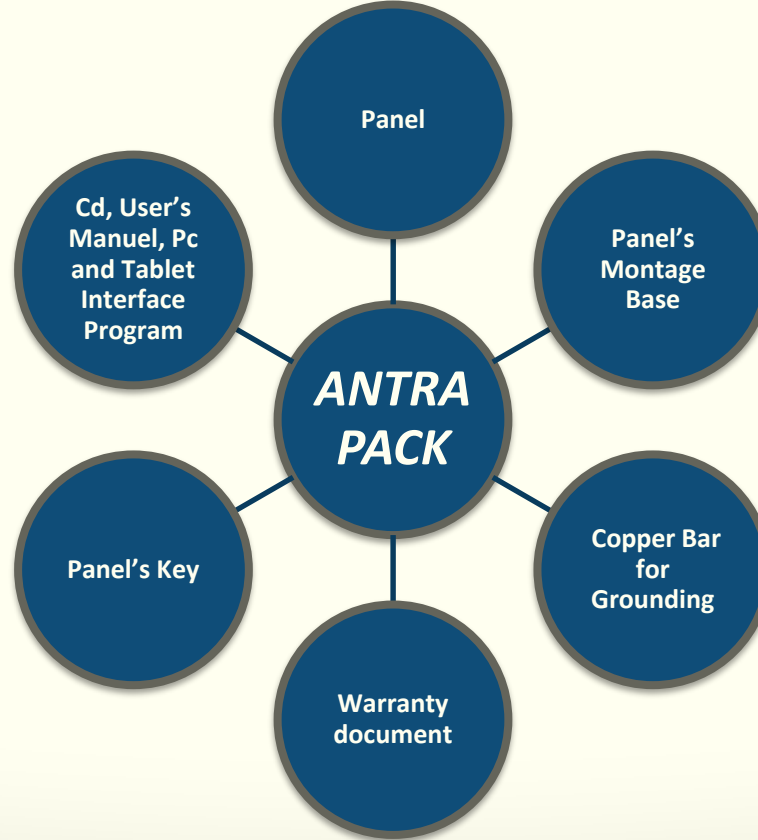
www.sinyalizasyon.com.tr
info@sinyalizasyon.com.tr



3 of 14



ANTRA PACK



USER MANAGEMENT

- ➔ Different user permissions for different levels of access. Every user action is logged.
- ➔ Program loading and full access on ANTRA intersection controller, loading and full control via RS485, WI-FI, internet (cloud) system are provided. Programming via the cloud server by logging in from www.trafficonmap.com, first the serial number of the HEPI modem board of the device being operated is changed, the name of the assembly is written and the device is activated and the device is activated for programming.

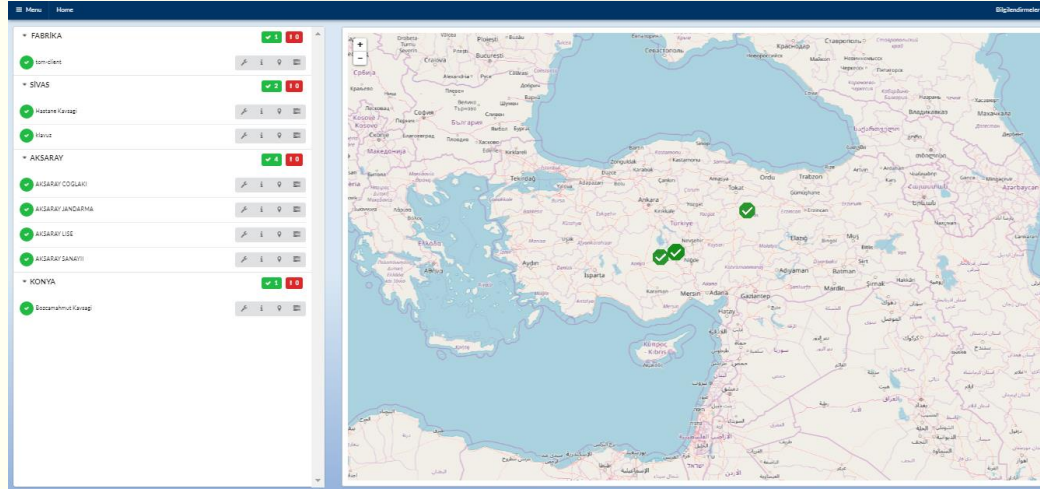
Program Adı	Süre (sn)	Grup-1	Grup-2	Grup-3	Grup-4	Grup-5	Grup-6	Grup-7	Grup-8	Grup-9	Grup-10	Grup-11
Adrs: 1	8	3	1	1	1	1	1	1	1	1	10	10
Adrs: 2	8	4	1	1	1	1	1	1	1	1	10	10
Adrs: 3	5	12	1	1	1	1	1	1	1	1	10	10
Adrs: 4	2	2	1	1	1	1	1	1	1	1	10	10
Adrs: 5	2	1	1	3	1	1	1	1	1	1	10	10
Adrs: 6	10	1	1	1	4	1	1	1	1	1	10	10
Adrs: 7	5	1	1	12	1	1	1	1	1	1	10	10
Adrs: 8	2	1	1	2	1	1	1	1	1	1	10	10
Adrs: 9	2	1	1	1	3	1	1	1	1	1	10	10
Adrs: 10	8	1	1	1	4	1	1	1	1	1	10	10
Adrs: 11	6	1	1	1	1	1	1	1	1	1	10	10

Name	Address	Status
ANTRAY COGLARI	10000000000000000000	Online

Device Name	Device Address	Device ID	Device Type	Device Model	Device Status
ANTRAY COGLARI	10000000000000000000	10000000000000000000	ANTRAY	ANTRAY	Online



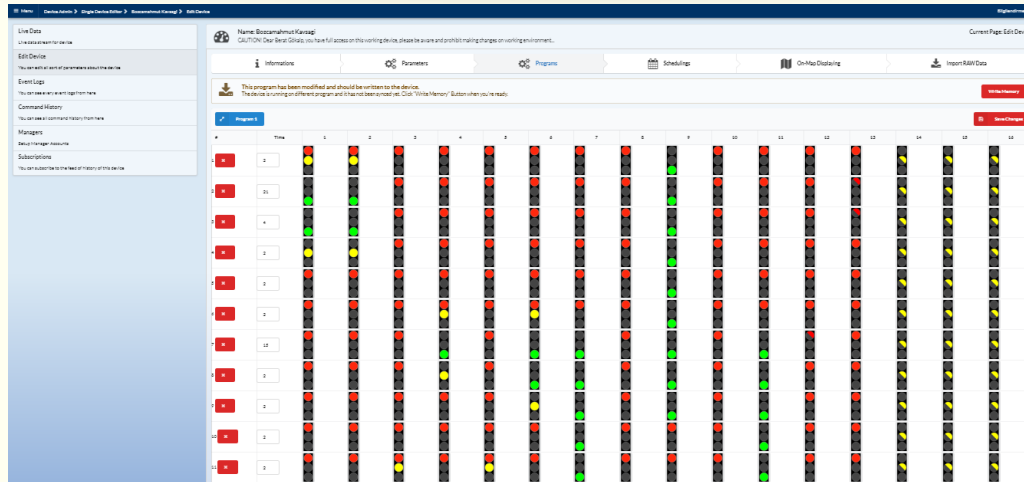
CONTROL FROM ONE CENTER



- ➔ The Antra Intersection Controller has the ability to control all of the intersection controllers in the city from the center with the TrafficOnMap Server.
- ➔ The device has RS485 cable and it can be programmed from the side of the product as well as the ANTRA Intersection controller can be programmed via remote access via Trafficonmap server.



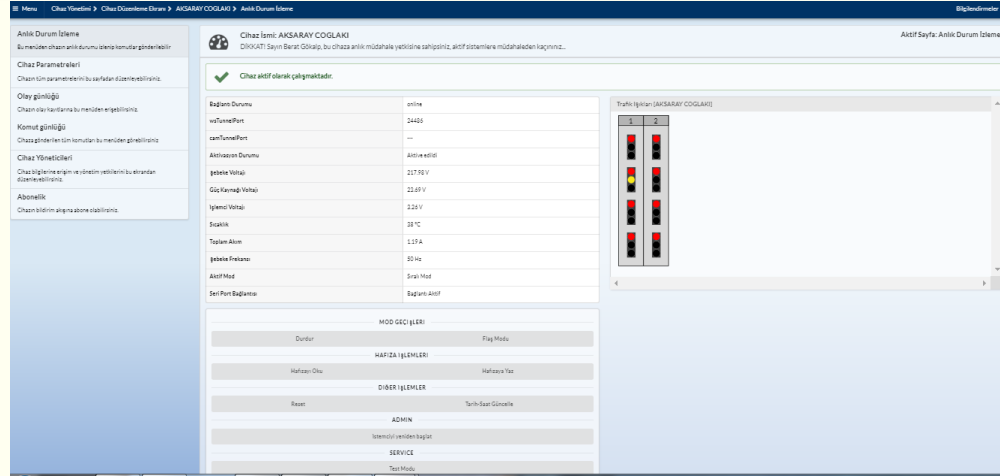
TEST PROCEDURE



➔ **TEST PROCEDURE:** The cards and the groups defined on the device used with the service purpose are displayed on the screen as a representative of the traffic lights by clicking on the mouse with the individual desired lamps flashing mode. Thus, it is much easier to detect line faults and correct faults are eliminated in a short time.



REMOTE ACCESS



The screenshot displays a web-based interface for remote access to a device. The main content area shows a table of parameters for the device 'AKSARAY COGLAKI'. The parameters include:

Parameter	Value
Bağlantı Durumu	online
IP Adresi	192.168.1.100
Port	24456
Sanal IP Adresi	---
Sanal Port	---
Aktivasyon Durumu	Aktif değil
İçerik Voltajı	217.50 V
Güç Kaynağı Voltajı	22.69 V
İçerik Voltajı	22.6 V
Sıcaklık	38 °C
Taahhüt Akımı	1.15 A
İşletme Frekansı	50 Hz
Aktif Mod	Standart Mod
Sevkiyet Durumu	Başlangıç Aktif

Below the table, there are sections for 'MOD GÖRÜŞLERİ' (Modes), 'HAFIZA İŞLEMLERİ' (Memory Operations), and 'DİĞER İŞLEMLER' (Other Operations). The 'MOD GÖRÜŞLERİ' section shows 'Durdur' (Stop) and 'Flaş Modu' (Flash Mode). The 'HAFIZA İŞLEMLERİ' section shows 'Hafızayı Sil' (Erase Memory) and 'Hafızaya Yaz' (Write to Memory). The 'DİĞER İŞLEMLER' section shows 'Reset' and 'Tarih-Saat Gözetimi' (Date-Time Monitoring). The 'ADMIN' section shows 'İstemiyle yeniden başlat' (Restart on Demand). The 'SERVICE' section shows 'Test Modu' (Test Mode).

On the right side of the interface, there is a 'Trafik İşlemleri (AKSARAY COGLAKI)' section with two columns of traffic lights, each with red, yellow, and green indicators.

➡ Problems and device information can be detected instantly through the Trafficonmap server, such as operational status, any fault conditions, infrastructure problems, high voltage and low voltage faults, lamp breaks and lamp burning.

➡ In addition, information such as main voltage, activation status of the device, power supply voltage, processor voltage, temperature of the device, total current drawn, frequency, mode in which it operates etc. can be monitored instantaneously.



SUPERIOR PROTECTION

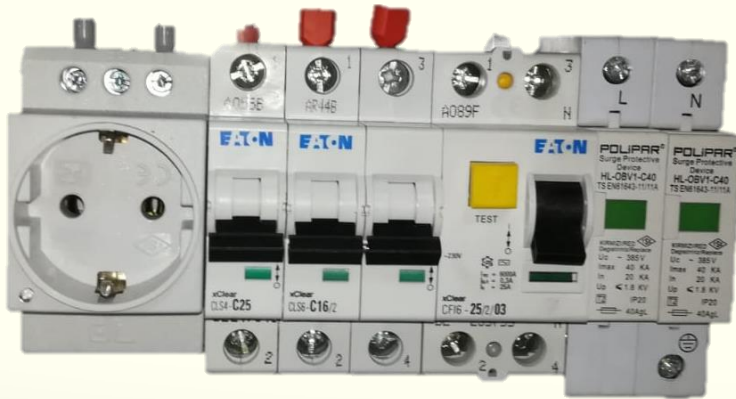
- ➔ The Antra Intersection Control Device has been produced taking into account the extraordinary requirements from design to production.
- ➔ **HIGH VOLTAGE PROTECTION (PARAFUDR)** Protects sensitive electronic components on the device by throwing lightning or high voltages coming from the network into the ground in one go.
- ➔ **EMI-RFI FILTER** Corrects the frequency of dirty harmonic signals and radio noise from the network, so that the device operates more healthily.
- ➔ **V CUTTER AUTOMAT** cuts the phase and neutral connection when interfere with the field or device.
- ➔ **0.3A LEAK CURRENCY FUSE** It will switch itself by switching on 300mA leakage currents that may occur on the system.



SUPERIOR PROTECTION

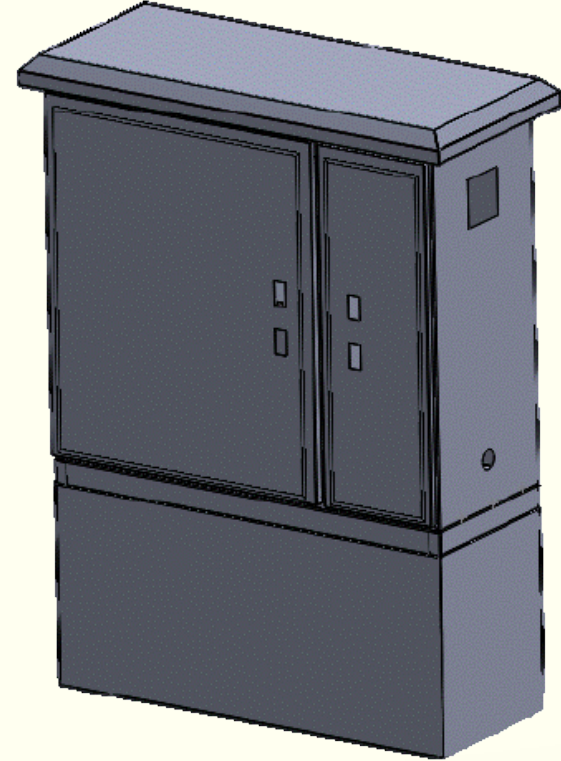
➔ **RAY TYPE GROUNDING PLUG:** When it is necessary to intervene in the device, 0.3A leakage current fuse, 220v is used by closing the device.

➔ **0.03A LEAK CURRENT RELAY:** Relay of 30 mA human protection leakage current. It is possible to cut off the energy in the event of a crash or accident which may occur in the poles and substructure via the lamp outlets.



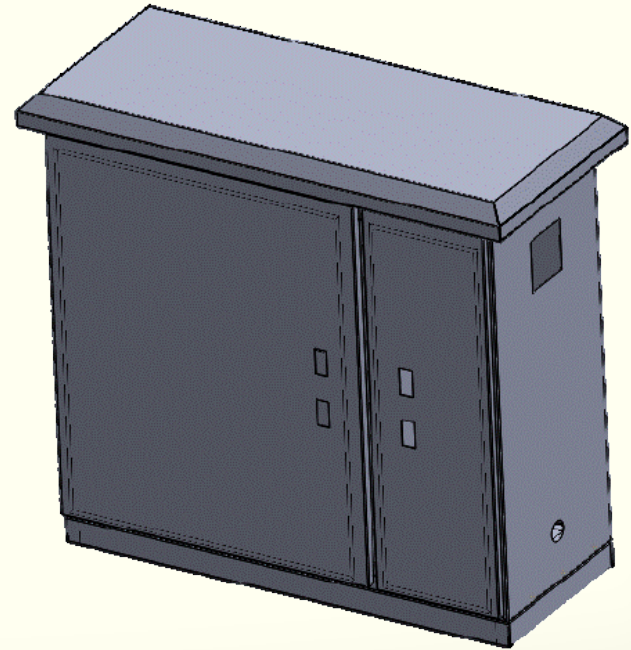
DEVICE PROPERTIES

- ✓ Vehicle dedector
- ✓ Synchronous operation
- ✓ Police control
- ✓ 32 vehicle or pedestrian groups
- ✓ Test operation
- ✓ Programmable flasher
- ✓ Step by step flasher
- ✓ Security against green conflict
- ✓ Pedestrian button

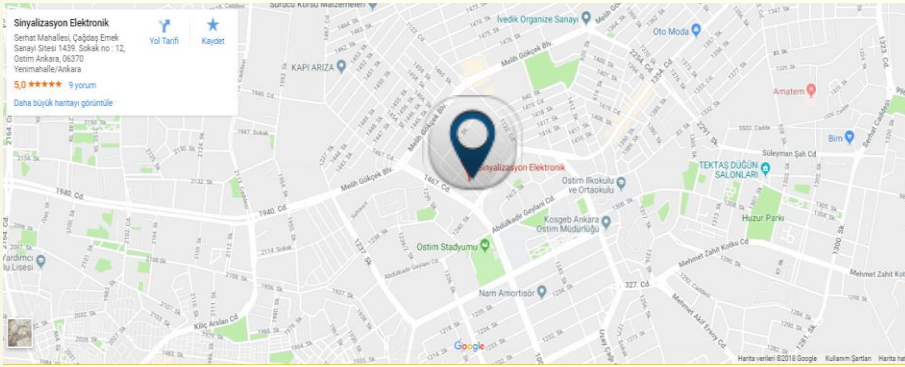


DEVICE PROPERTIES

- ✓ Can identify missing lambs in all color
- ✓ Automatic turn-off in the event of a direction red lamb failure
- ✓ Full electronic modular construction
- ✓ Can operate at 220V -%20 +10% voltage range
- ✓ Enhanced security measures
- ✓ Electronic real time clock
- ✓ 8 different programs for 7 days A week
- ✓ Flasher
- ✓ Green wave system



CONTACT



Website

www.sinyalizasyon.com.tr



E-Mail

info@sinyalizasyon.com.tr



Facebook

facebook.com/sinyalizasyon.trafik/



Twitter

twitter.com/SinyalizasyonTR



YouTube

Youtube.com/sinyalizasyon.trafik/



Address

Çağdaş Emek Sanayi Sitesi 1439. Sokak
No:12 Ostim / Yenimahalle - ANKARA



TELEPHONE

0312 395 35 45



Çağdaş Emek Sanayi Sitesi
1439. Sokak No: 12 Ostim
Yenimahalle-ANKARA
TEL: 0 312 395 3545

www.sinyalizasyon.com.tr
info@sinyalizasyon.com.tr



13 of 14





SINYALIZASYON

**ANTRA
INTERSECTION CONTROLLER
DEVICE**